



# 2010 Olympic and Paralympic Games

May 5, 2010

Dr. Patricia Daly

Chief Medical Health Officer

Vancouver Coastal Health



# Outline



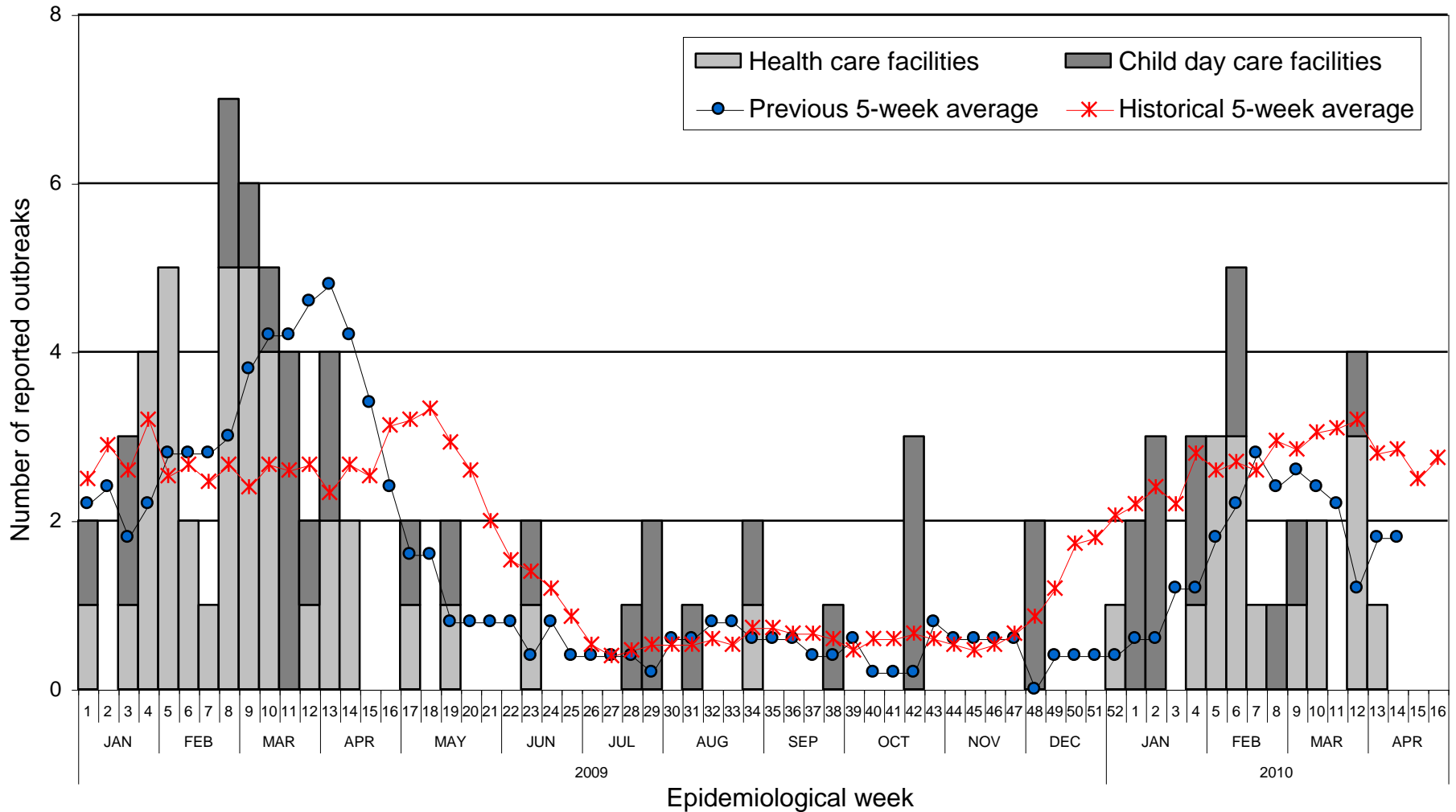
- Outbreaks and communicable disease
  - Gastrointestinal illness
  - Respiratory illness
  - Imported communicable diseases
- Injuries
- Health System impact
- Reporting and communication

# Gastrointestinal Illness

- Norovirus “season”
- Evidence of widespread community transmission pre-Games
- Outbreak within a temporary housing facility for Olympic workforce
- No spread within Athletes’ Villages

## Enteric outbreaks reported in facilities\* by epidemiological week.

**Vancouver Coastal Health Authority, 2009/2010 compared to previous 5-week average and historical 5-week average<sup>†</sup>**

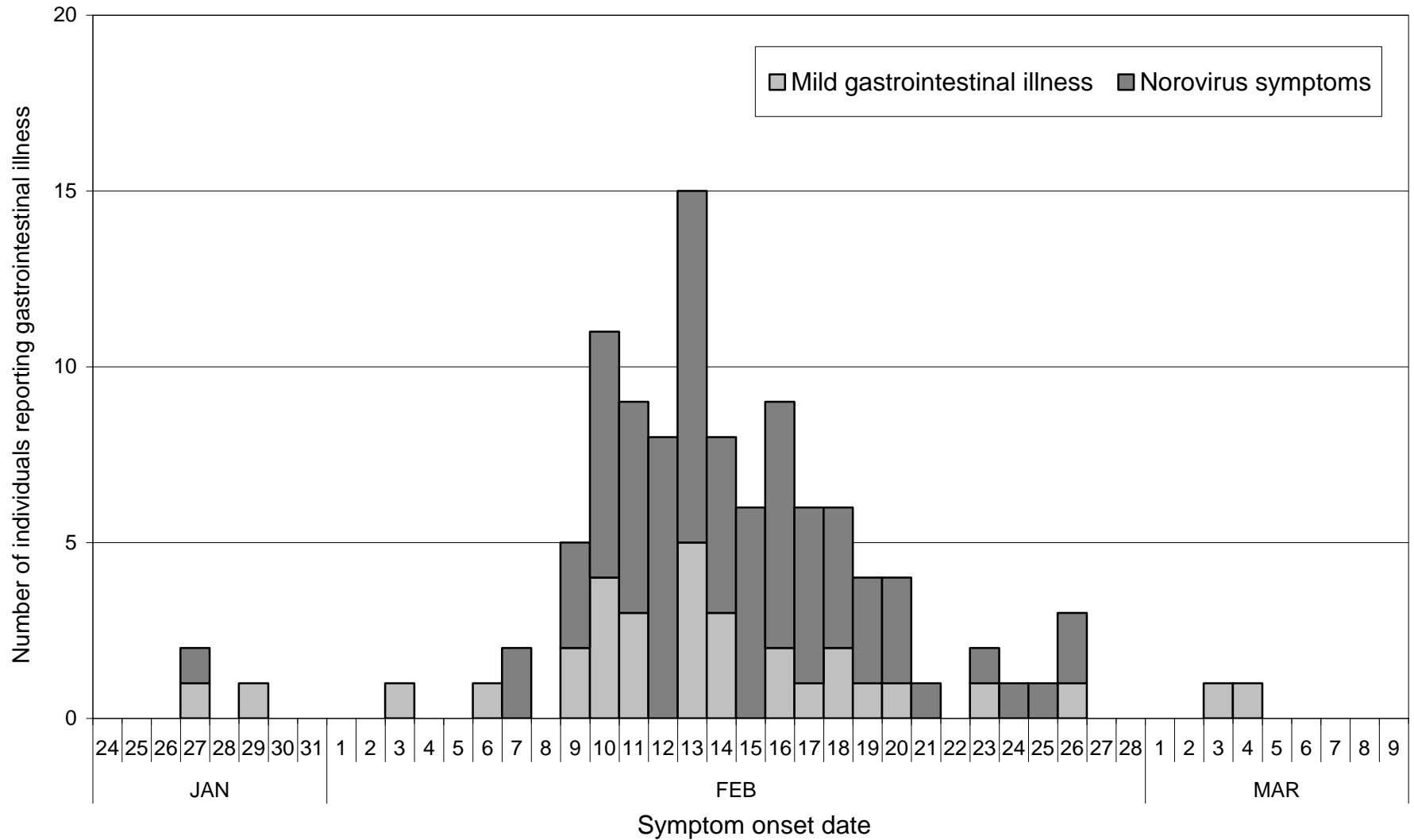


\*Facilities include acute care, long-term care, rehabilitation settings and child day care. <sup>†</sup>Includes data since 2006.

Source: Vancouver Coastal Health, Public Health Surveillance Unit (Enteric and ILI Outbreak Reports Database).

Prepared by: Vancouver Coastal Health, Public Health Surveillance Unit.

**Number of individuals reporting gastrointestinal illness by symptom onset date.  
Olympic Workforce Temporary Housing Facility, Whistler, 2010 (n=108)**



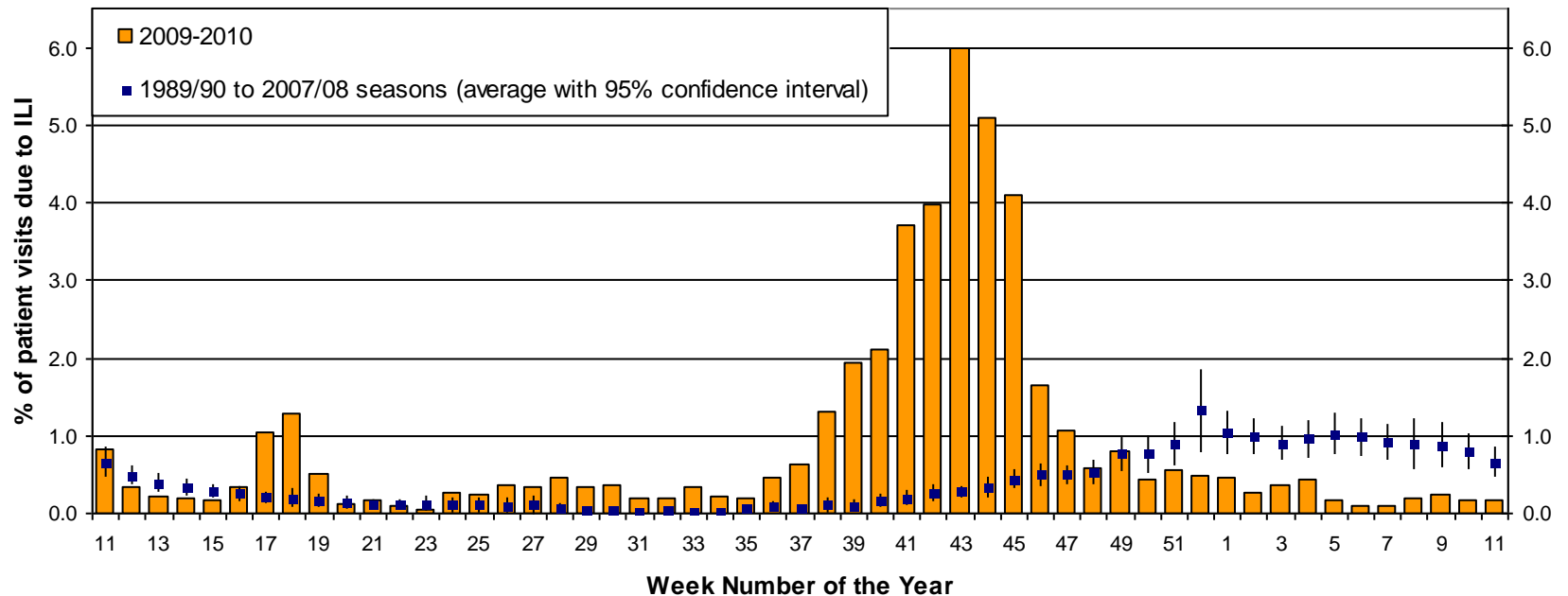
Source: Vancouver Coastal Health, Health Protection.  
Prepared by: Vancouver Coastal Health, Public Health Surveillance Unit.



# Respiratory Activity

- Low levels of respiratory activity
- Influenza activity below seasonal norms
- Other respiratory viruses in circulation
  - Respiratory syncytial virus
- Localized activity
  - Coastal (North Shore, Whistler)

## Percentage of Patient Visits due to Influenza Like Illness (ILI) per Week Compared to Average Percentage of ILI Visits for the Past 19 Seasons Sentinel Physicians, British Columbia, 2009-2010

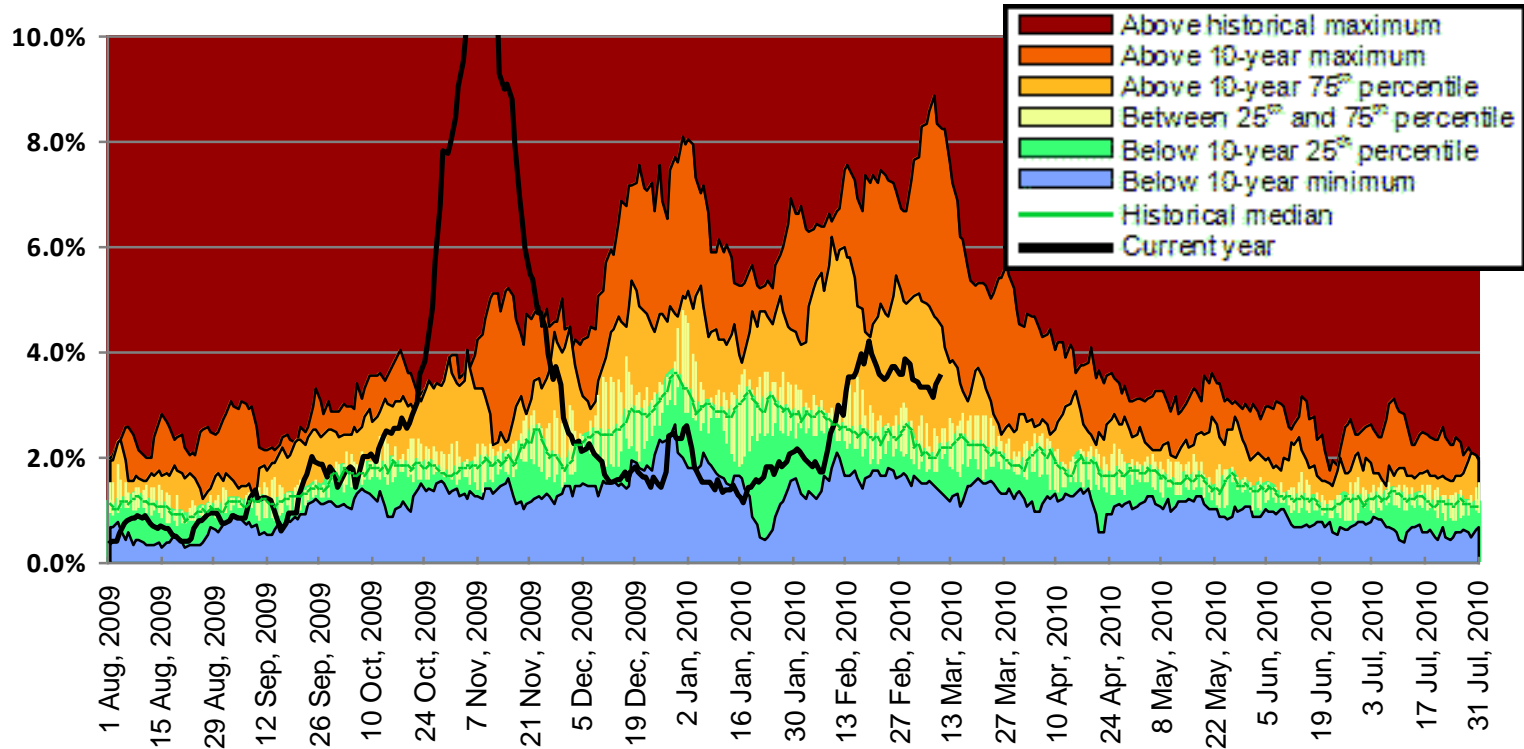


\*\*Data subject to change as reporting becomes increasingly complete

Source: BCCDC, Influenza & Emerging Respiratory Pathogens Team, March 24, 2010.

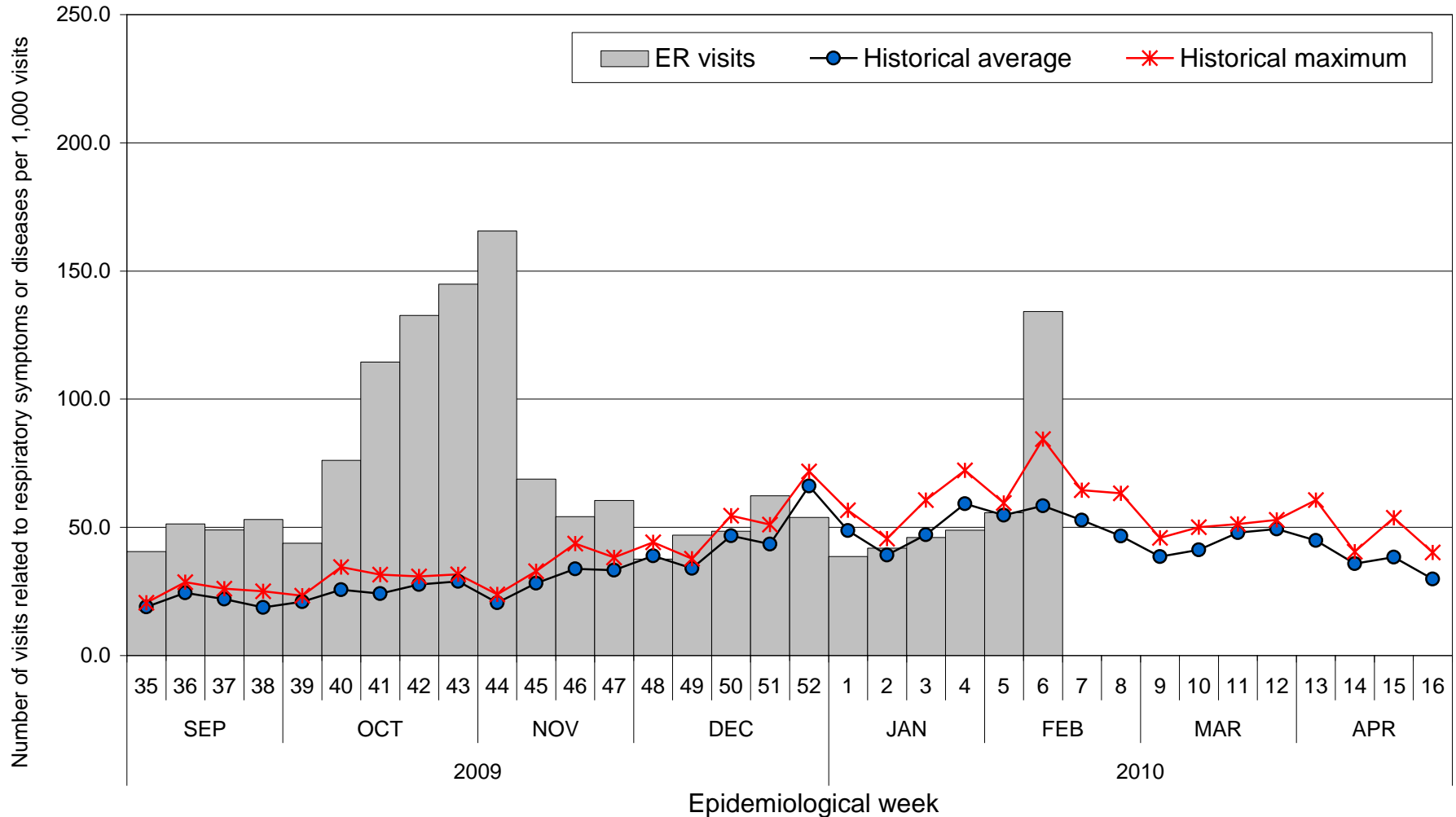


**Acute Respiratory Illness (ARI)\* claims as a percent of all medical service provider (MSP) claims\* received for selected GP services, 7-day moving average.  
Howe Sound Local Health Area, August 1, 2009 to March 10, 2010**



\*ARI is monitored through ICD9 codes 466 and 480-487, using Medical Service Plan (MSP) Service Codes for General Practice (GP) services.  
Source: British Columbia Ministry of Health, MSP Acute Respiratory Illness Surveillance Project v2.0, March 10, 2010.

**Number of ER visits related to respiratory symptoms or diseases\* per 1,000 visits by epidemiological week.  
Lions Gate Hospital, 2009/2010 visits compared to historical average and maximum<sup>†</sup>**



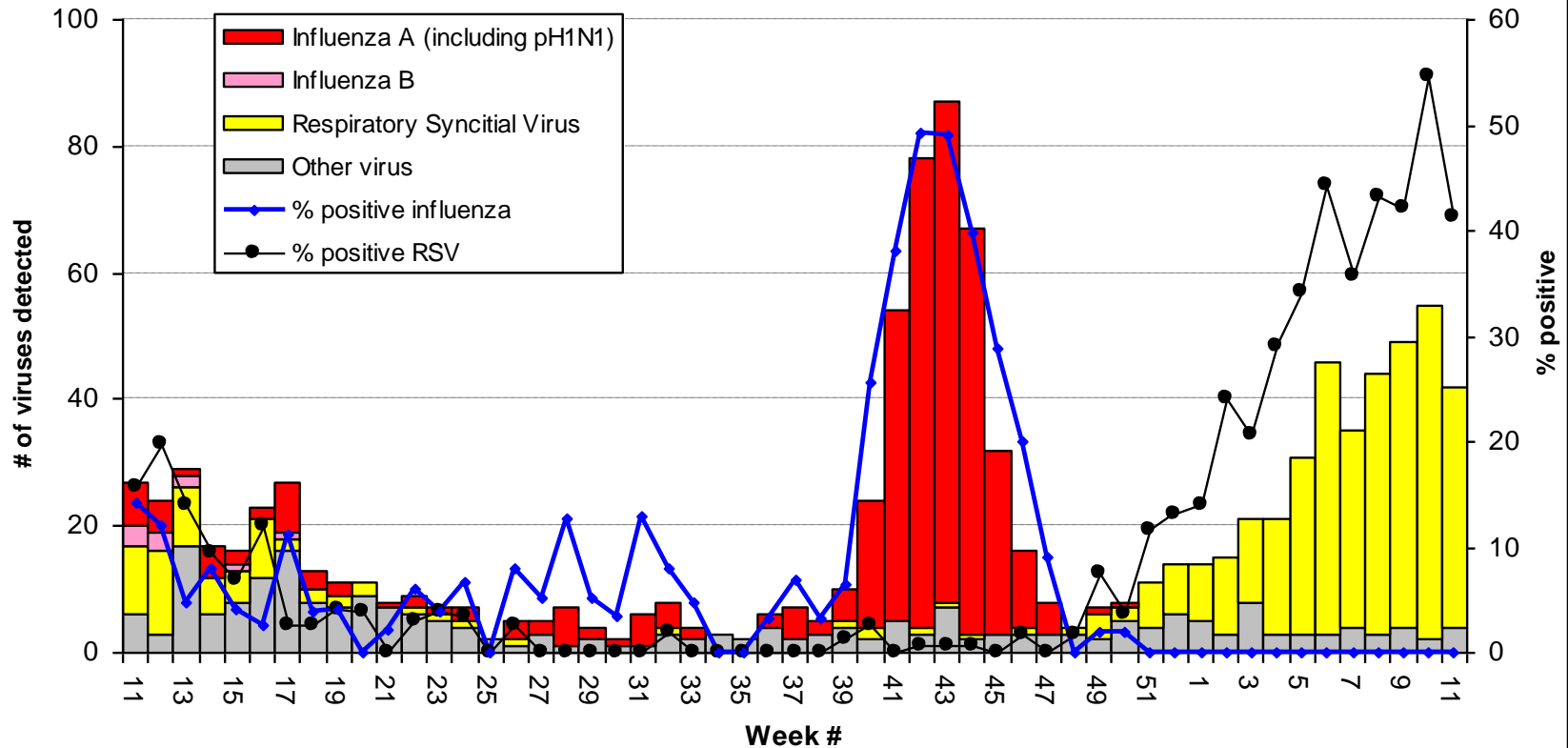
\*Respiratory related symptoms or diseases are monitored through presenting complaints as fever or cough, acute respiratory diseases and influenza-like illness.

<sup>†</sup>Includes data since 2006.

Source: Emergency Department Visits from McKesson System (Lions Gate Hospital, Pemberton Health Centre, Squamish General Hospital and Whistler Health Care Centre).

Prepared by: Vancouver Coastal Health, Public Health Surveillance Unit.

**Virus detections and proportion of respiratory specimens submitted to  
BC Children and Women's Health Centre Laboratory diagnosed positive for a virus  
by epidemiological week. British Columbia, 2009/2010**

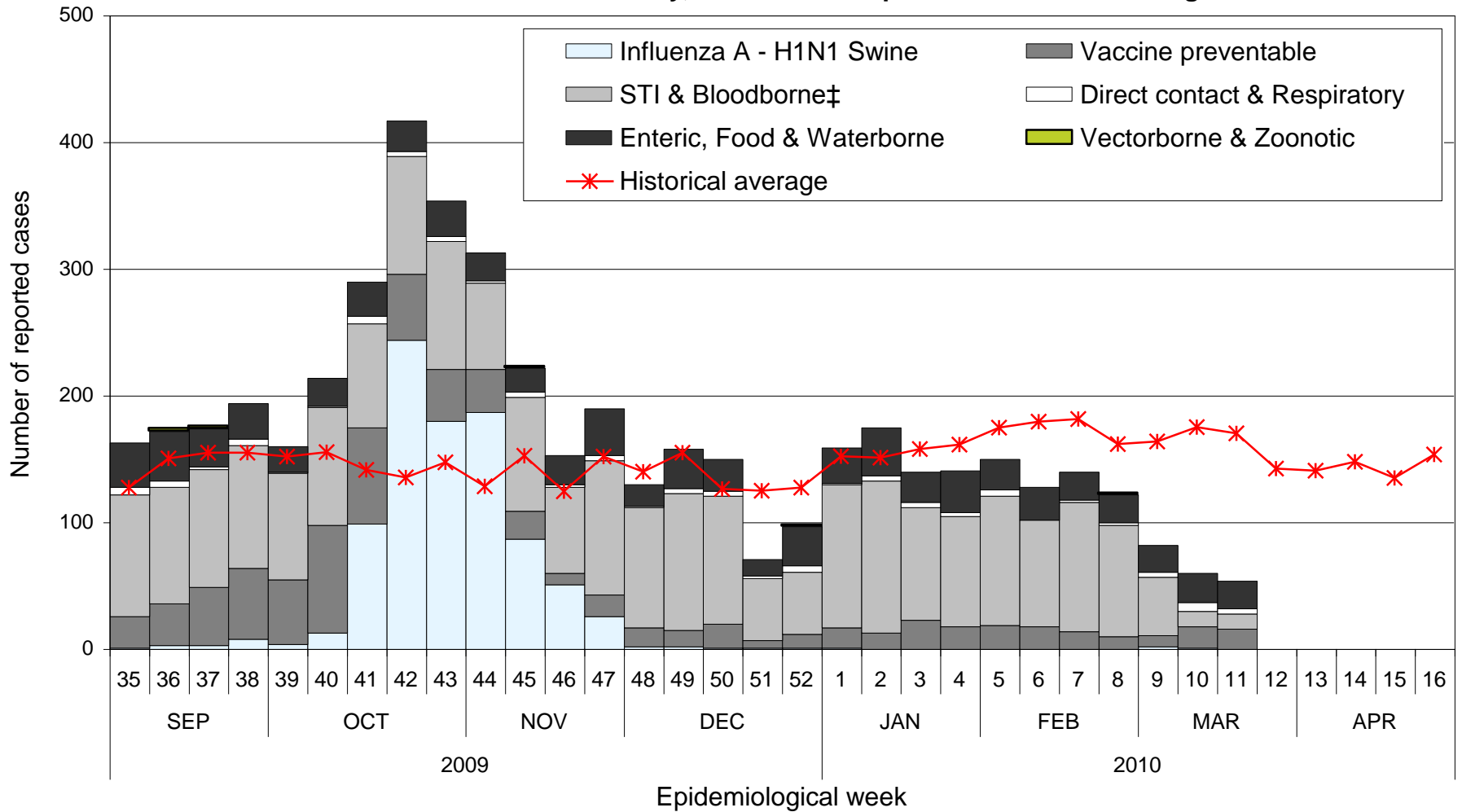


Source: BCCDC, Influenza & Emerging Respiratory Pathogens Team, March 24, 2010.

# Imported Communicable Diseases

- Measles importation coincidental in time with the Olympic Games
- One out-of-country visitor infected
- No known cases among Olympic athletes
  - 2 doses of MMR recommended by VCH for all athletes before the Games

**Communicable disease notifications by disease category and epidemiological week\*.  
Vancouver Coastal Health Authority, 2009/2010 compared to historical average†**



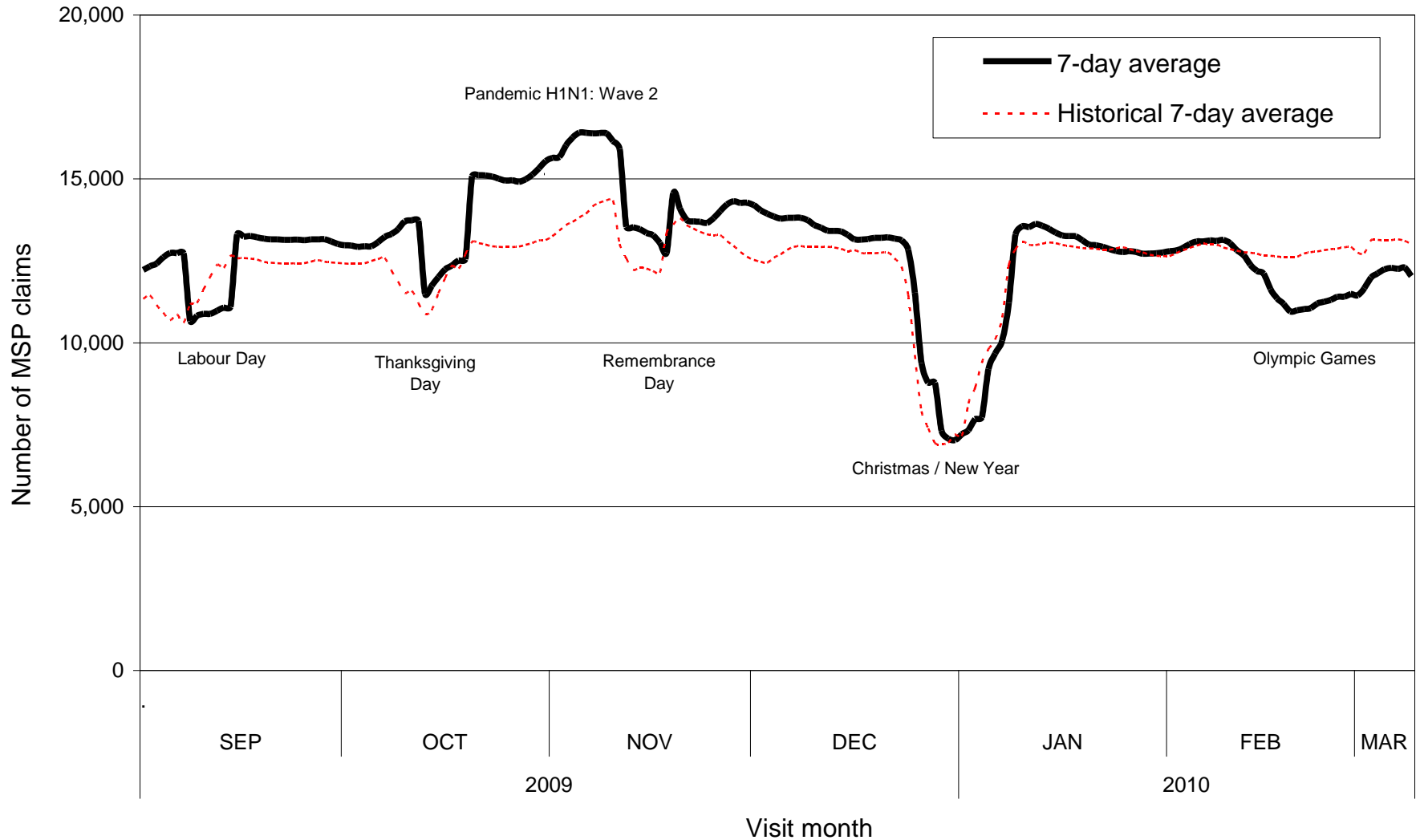
\*Case counts may fluctuate over time due to lag in reporting or change in episode date (symptom onset date, specimen collection date, report date).

†Includes data since 2007. ‡STI (chlamydia, gonorrhoea and syphilis) data for March and April 2010 are not available.

Source: Vancouver Coastal Health, Public Health Surveillance Unit (PARIS & iPHIS), extracted on April 12, 2010.

Prepared by: Vancouver Coastal Health, Public Health Surveillance Unit.

**Number of medical service provider (MSP) general practice claims by month.  
Vancouver Coastal Health Authority, 2009/2010 7-day average compared to historical 7-day average\***



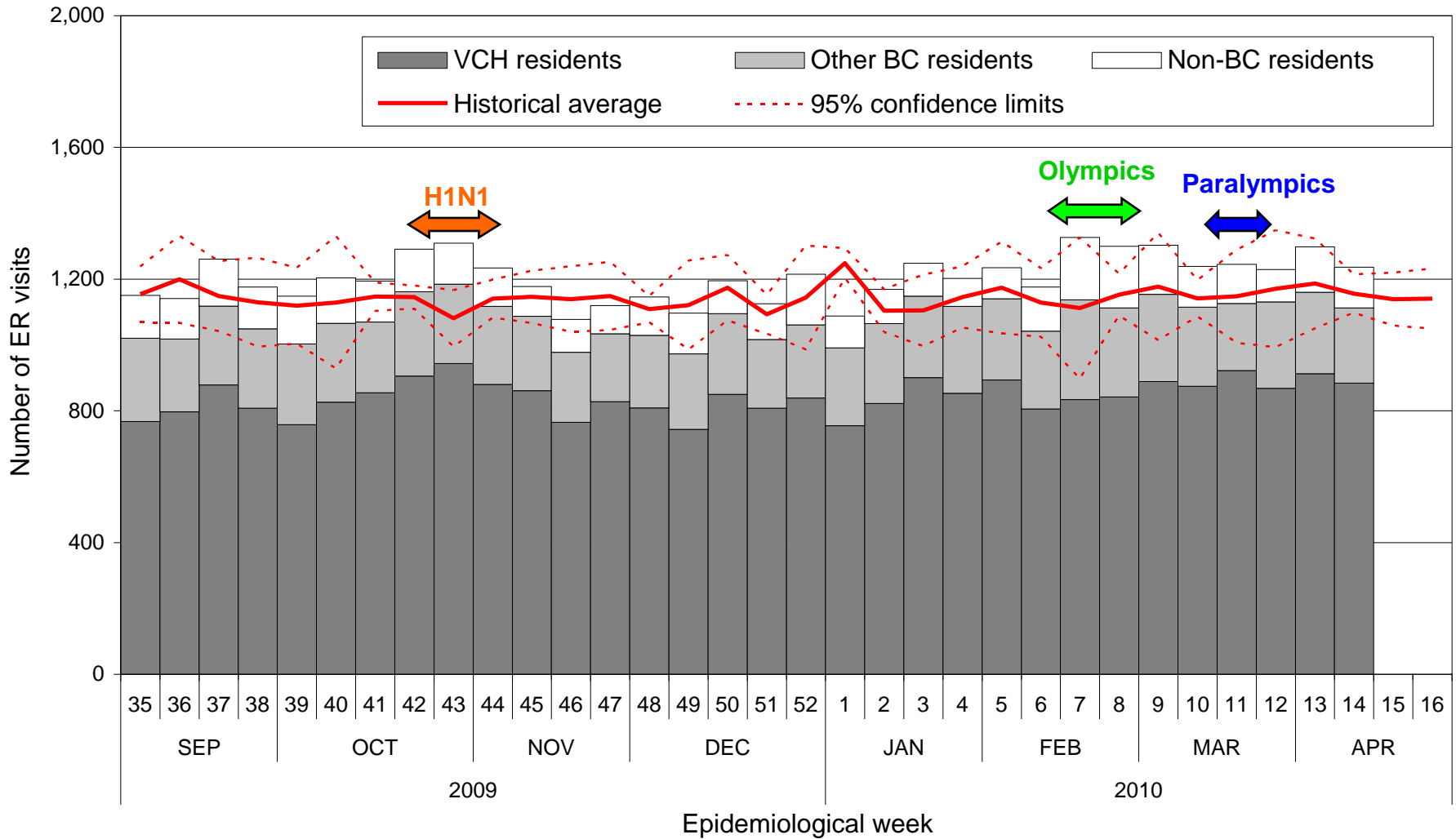
\*Includes data since 2005.

Source: Population Health Surveillance and Epidemiology, British Columbia Ministry of Healthy Living and Sport  
Prepared by: Vancouver Coastal Health, Public Health Surveillance Unit.

# Health System Impact

- No significant impact on health services due to Games visitors
- Impact of Olympic crowds in downtown Vancouver: Emergency room visits
  - Vancouver General Hospital (Olympic Family)
  - St. Paul's Hospital (Olympic spectator)
- No change in hospital admission rates

**Number of ER visits by resident location\* and epidemiological week.  
St. Paul's Hospital, 2009/2010 compared to historical average and 95% confidence limits†**



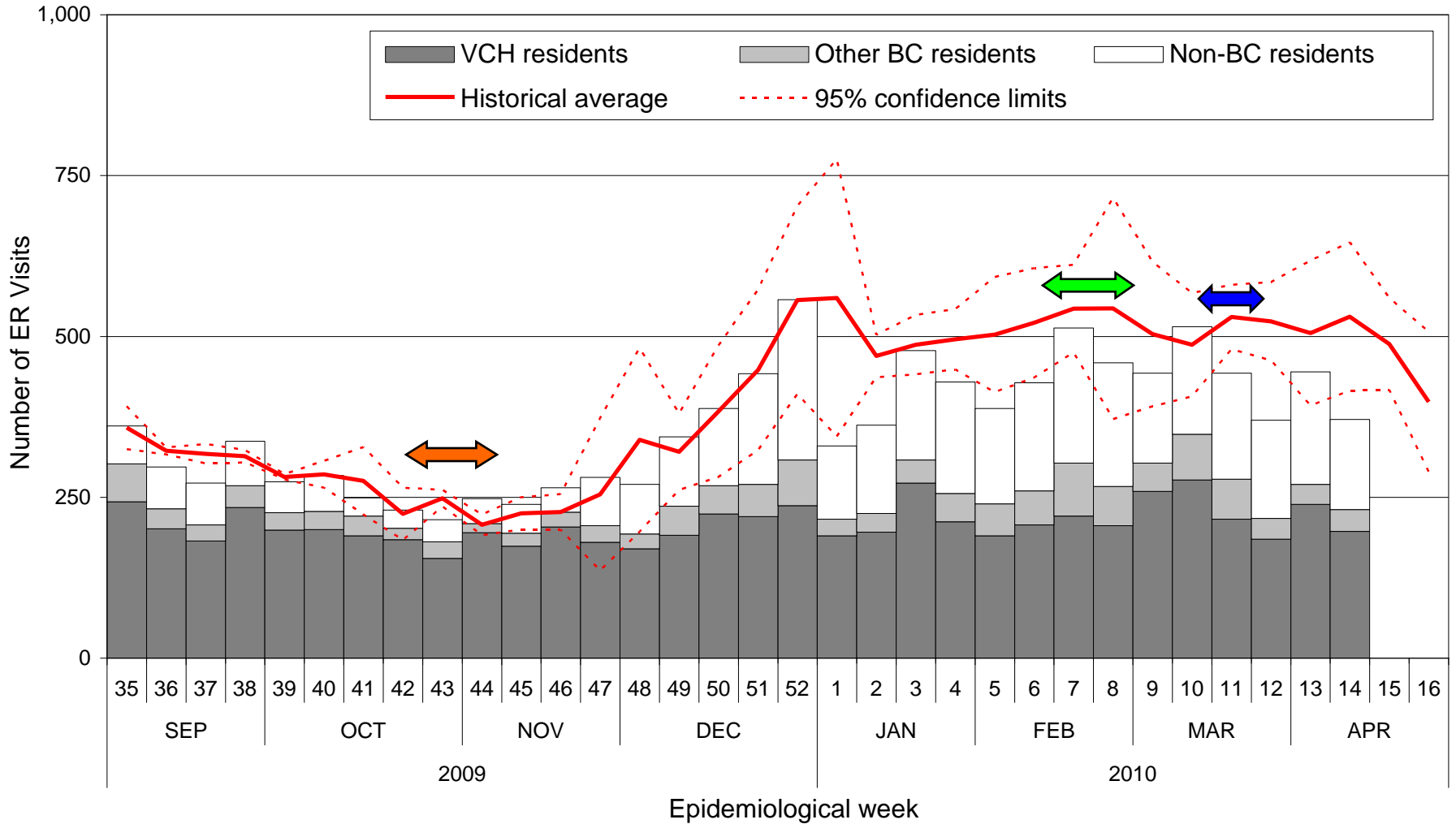
\*Determined by the patient's postal code at the time of visit. Non-BC residents include those with an unknown postal code at time of visit. †Includes data since 2006.

Source: Emergency Department Visits from Eclipsys System (Mount Saint Joseph Hospital, St. Paul's Hospital).

Prepared by: Vancouver Coastal Health, Public Health Surveillance Unit.



**Number of ER visits by resident location\* and epidemiological week.  
Whistler Health Care Centre, 2009/2010 compared to historical average and 95% confidence limits†**

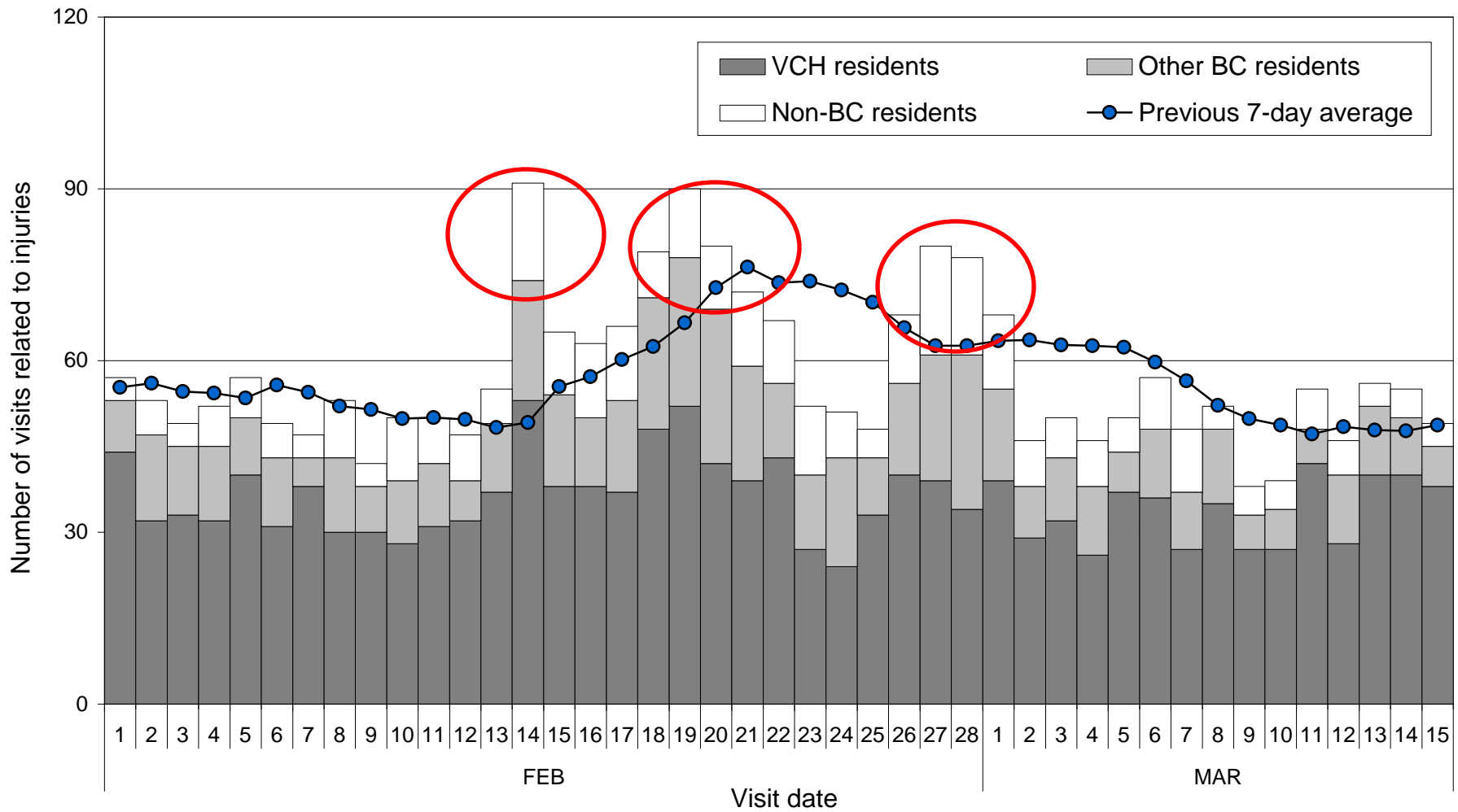


\*Determined by the patient's postal code at the time of visit. Non-BC residents include those with an unknown postal code at time of visit. †Includes data since 2006.  
Source: Emergency Department Visits from McKesson System (Lions Gate Hospital, Pemberton Health Centre, Squamish General Hospital, Whistler Health Care Centre).  
Prepared by: Vancouver Coastal Health, Public Health Surveillance Unit.

# Injuries

- Increase in injury presentations
  - St. Paul's Hospital (designated spectator hospital)
  - Falls (incident at “LiveCity” Yaletown)
  - Assaults (Richmond and Vancouver)
  - Substance misuse (public intoxication)
  - Motor vehicle collision-related injuries

**Number of ER visits related to injuries\* by resident location<sup>†</sup> and visit date.  
St. Paul's Hospital, 2010 compared to previous 7-day average<sup>‡</sup>**



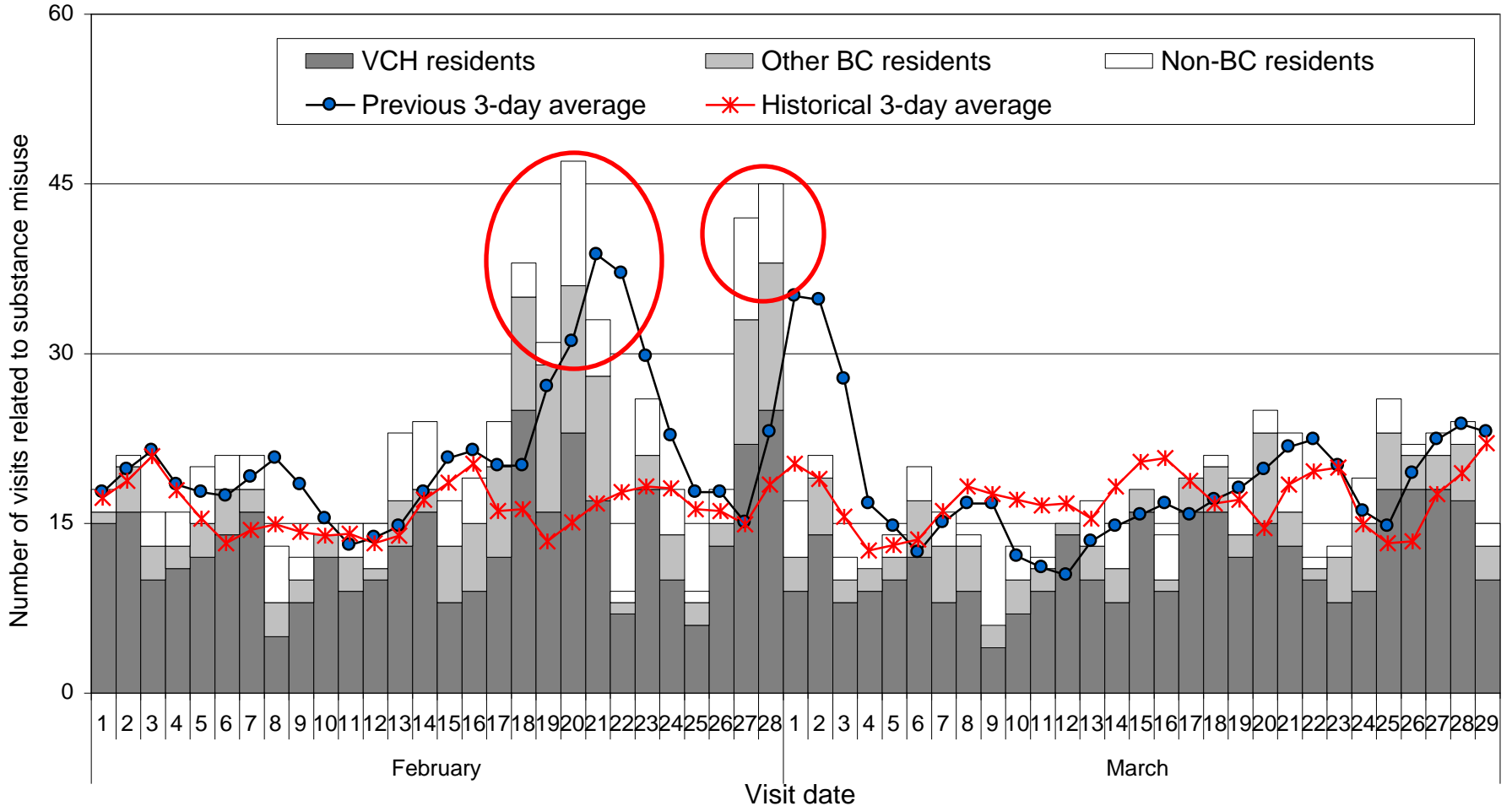
\*Injuries are monitored through ICD-9 codes E800-E999 and 800-899.

<sup>†</sup>Determined by the patient's postal code at the time of visit. Non-BC residents include those with an unknown postal code at time of visit. <sup>‡</sup>Historical data are not available.

Source: Emergency Department Visits from Eclipsys System (Mount Saint Joseph Hospital, St. Paul's Hospital).

Prepared by: Vancouver Coastal Health, Public Health Surveillance Unit.

**Number of ER visits related to substance misuse\* by resident status and visit date.  
Vancouver Coastal Health Authority, 2010 compared to previous 3-day average and historical 3-day average<sup>†</sup>**

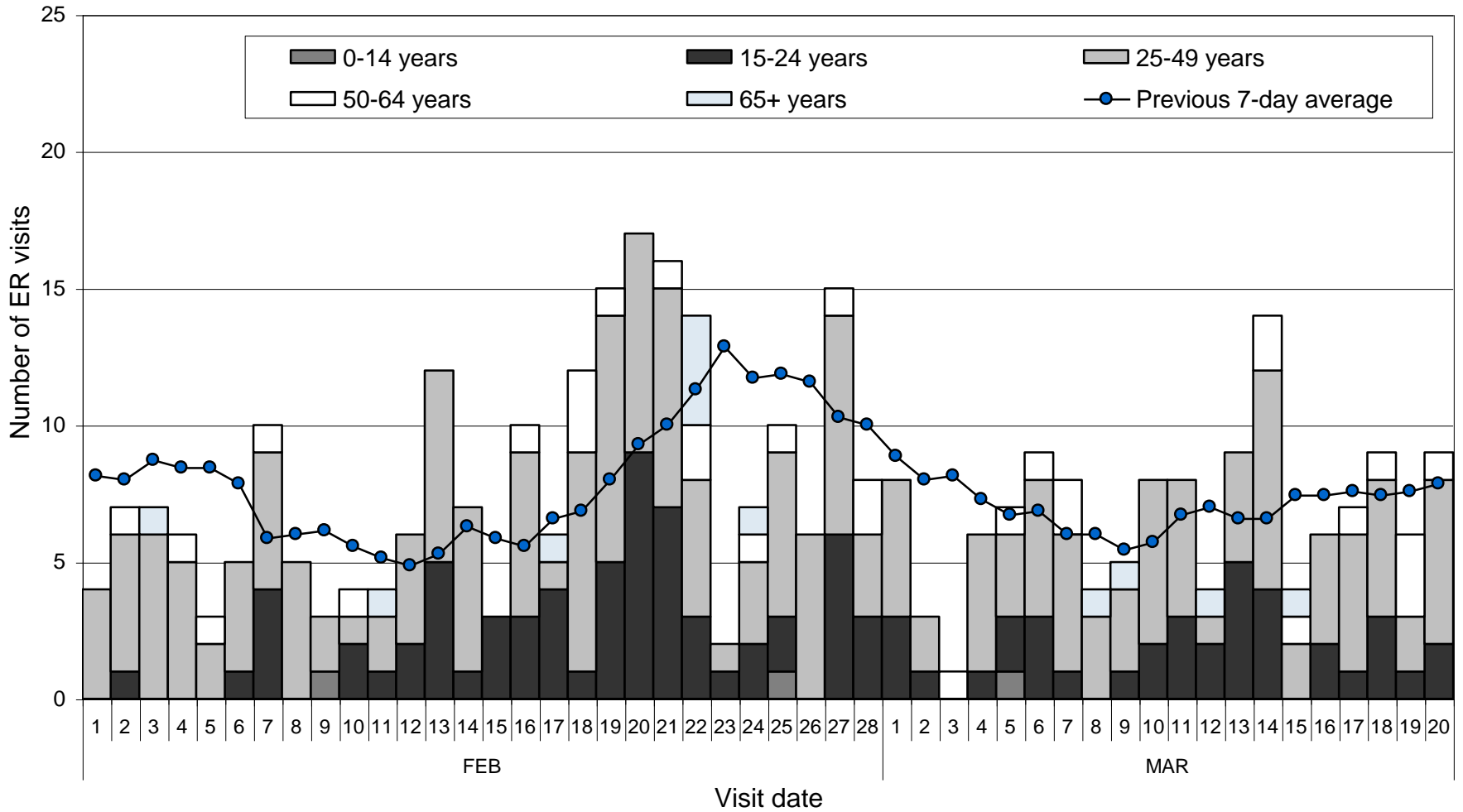


\*Substance misuse related visits are monitored through ICD-9 codes 291-292, 303, 304, 305, 648.3, 655.5, 693, 760.72, 760.73, 760.75, 779.5, 965.0, 969.7, 970.1, V65.4, 967.7, and E850-E858. <sup>†</sup>Includes data since 2008.

Source: Emergency Department Visits from CareCast System (Richmond Hospital, UBC Hospital, Vancouver General Hospital), Eclipsys System (Mount Saint Joseph Hospital, St. Paul's Hospital) and McKesson System (Lions Gate Hospital, Pemberton Health Centre, Squamish General Hospital, Whistler Health Care Centre).

Prepared by: Vancouver Coastal Health, Public Health Surveillance Unit.

**Number of ER visits related to assaults\* by age group and visit date.  
Vancouver Coastal Health Authority, 2010 compared to previous 7-day average†**



\*Visits related to assaults are monitored through ICD-9 codes E960-E968. †Historical data are not available.

Source: Emergency Department Visits from CareCast System (Richmond Hospital, UBC Hospital, Vancouver General Hospital), Eclipsys System (Mount Saint Joseph Hospital, St. Paul's Hospital) and McKesson System (Lions Gate Hospital, Pemberton Health Centre, Squamish General Hospital, Whistler Health Care Centre).

Prepared by: Vancouver Coastal Health, Public Health Surveillance Unit.

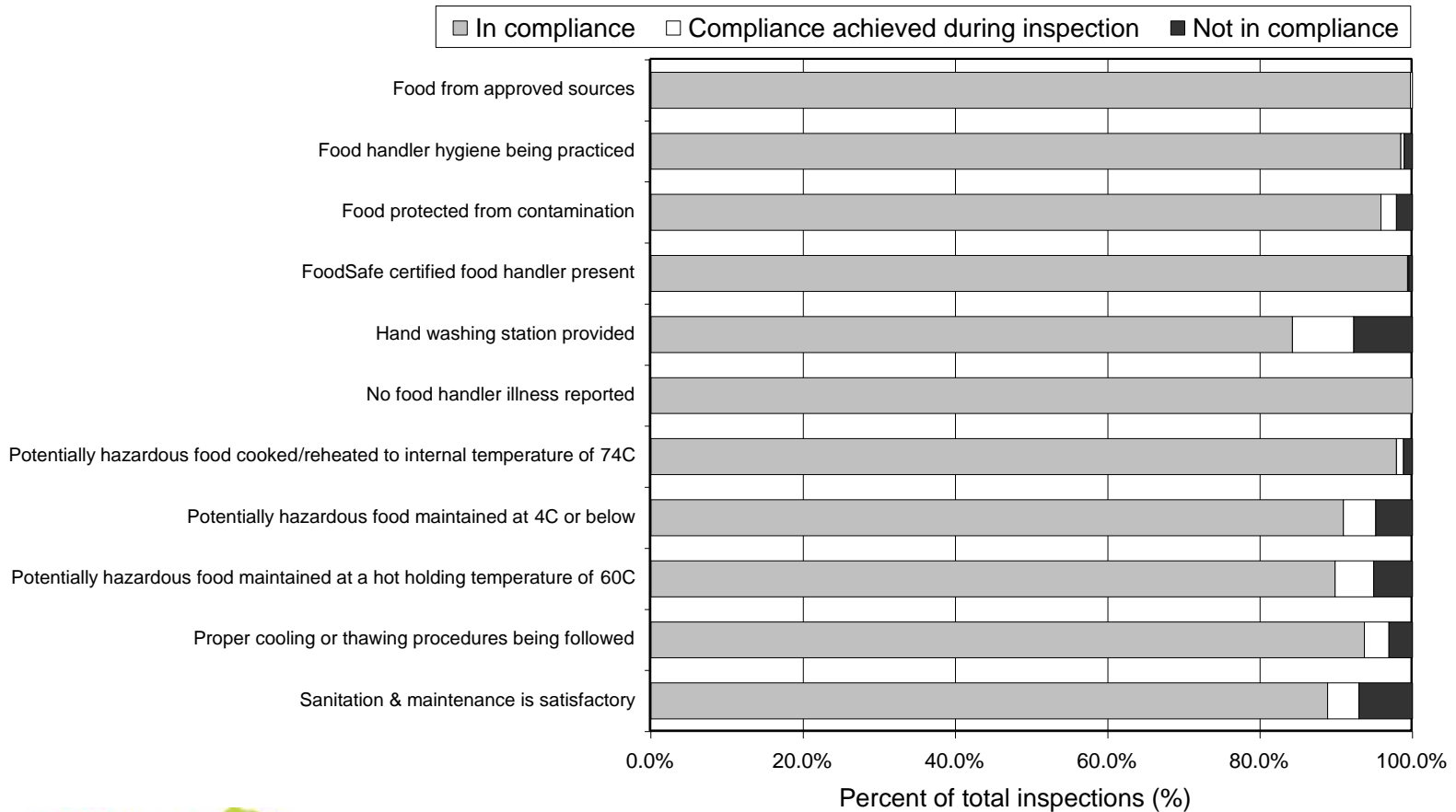
# Environmental Health

- Monitoring
  - Air Quality, Water Quality
- Food Safety
  - Inspection of all 7,000 VCH food service establishments prior to Games
  - Temporary food facilities
    - Food safety plans, daily inspection, food sampling and testing
  - Closure notices
    - An unapproved food preparation area in Russia House was shut down
  - Advisories



# Temporary Food Facilities

Food facility inspection activity and compliance results\* for temporary food facilities  
 Vancouver Coastal Health Authority, February 1 to 28, 2010



\*Results based on 417 temporary food facilities (Olympic venues, pavilions and celebration sites) and 2,066 inspections.

Source: Vancouver Coastal Health, Environmental Health.

Prepared by: Vancouver Coastal Health, Public Health Surveillance Unit.

# Public Health Emergencies

- No major emergencies
- Crowd issues
- Avalanches





# Health Promotion



**be your best.** be tobacco free.



vancouver2010



together we can  
STOP HIV and AIDS



vancouver2010



ensemble nous  
pouvons STOPPER  
le VIH et le SIDA



**Tobacco Free**  
2010 Games



# Reporting: 2010 Health Watch

- Public Health Olympic Updates
  - Regular newsletters (17) produced from Jan. 2008 to Dec. 2009
  - Public health planning activities
- 2010 Health Watch
  - Produced daily (41) during the Olympic and Paralympic Games
  - Distributed to: Games organizers, public health partners, public



# 2010 Health Watch

[http://www.vch.ca/your\\_environment/2010\\_health\\_watch/2010\\_health\\_watch](http://www.vch.ca/your_environment/2010_health_watch/2010_health_watch)

Vancouver Coastal Health **2010 Health Watch**  
*Promoting wellness. Ensuring care.*

February 20, 2010

**Contents**

- Summary .....1
- Avalanche Safety .....2
- Communicable Disease .....3
- Injury Surveillance .....4
- Health System Impact .....6
- Food Service Closures .....8
- Drinking Water Quality .....9
- Air Quality .....10
- Weather .....12
- Acknowledgements .....13



**Summary**

There has been a slight increase in foodborne illness complaints but other indicators of gastro-intestinal illness in the community are declining.

There has been an increase in visits due to injuries at Vancouver emergency departments on February 18 and 19.

Avalanche warning in place for backcountry areas of the South Coast Mountains from Pemberton to Lillooet and north – not including Whistler and Vancouver areas – through Monday, February 22.

Today's health promotion message:  
**In the backcountry be "avalanche smart."**  
 Read more on page 2

Vancouver Coastal Health **2010 Health Watch**  
*Promoting wellness. Ensuring care.*

March 30, 2010

**Contents**

- Summary .....1
- Measles Immunization .....2
- Communicable Disease .....3
- Injury Surveillance .....6
- Health System Impact .....7
- Emergency Management .....9
- Food Product Recalls .....10
- Food Service Closures .....11
- Drinking Water Quality .....11
- Air Quality .....12
- Contributors .....14
- Acknowledgements .....15



**Summary**

Measles transmission continues in the Lower Mainland at low levels, with 15 confirmed cases since early March.

As is usual for this time of year, norovirus activity continues to decline in VCH.

Two doses of measles vaccine are recommended for all those born after 1956.

Today's health promotion message:  
**Make sure you are vaccinated against measles.**  
 Read more on page 2

# The 5 Myths of the Cruise Ship

- STI
- Bed Bugs
- Rashes
- Scabies
- Sewage Spill



# Acknowledgements

- Dr. Jat Sandhu and the Public Health Surveillance Unit
- VCH Medical Health Officers
- Domenic Losito and VCH Health Protection
- Linda Poirier and VCH public health nurses
- John Hamilton
- All of our partners

